



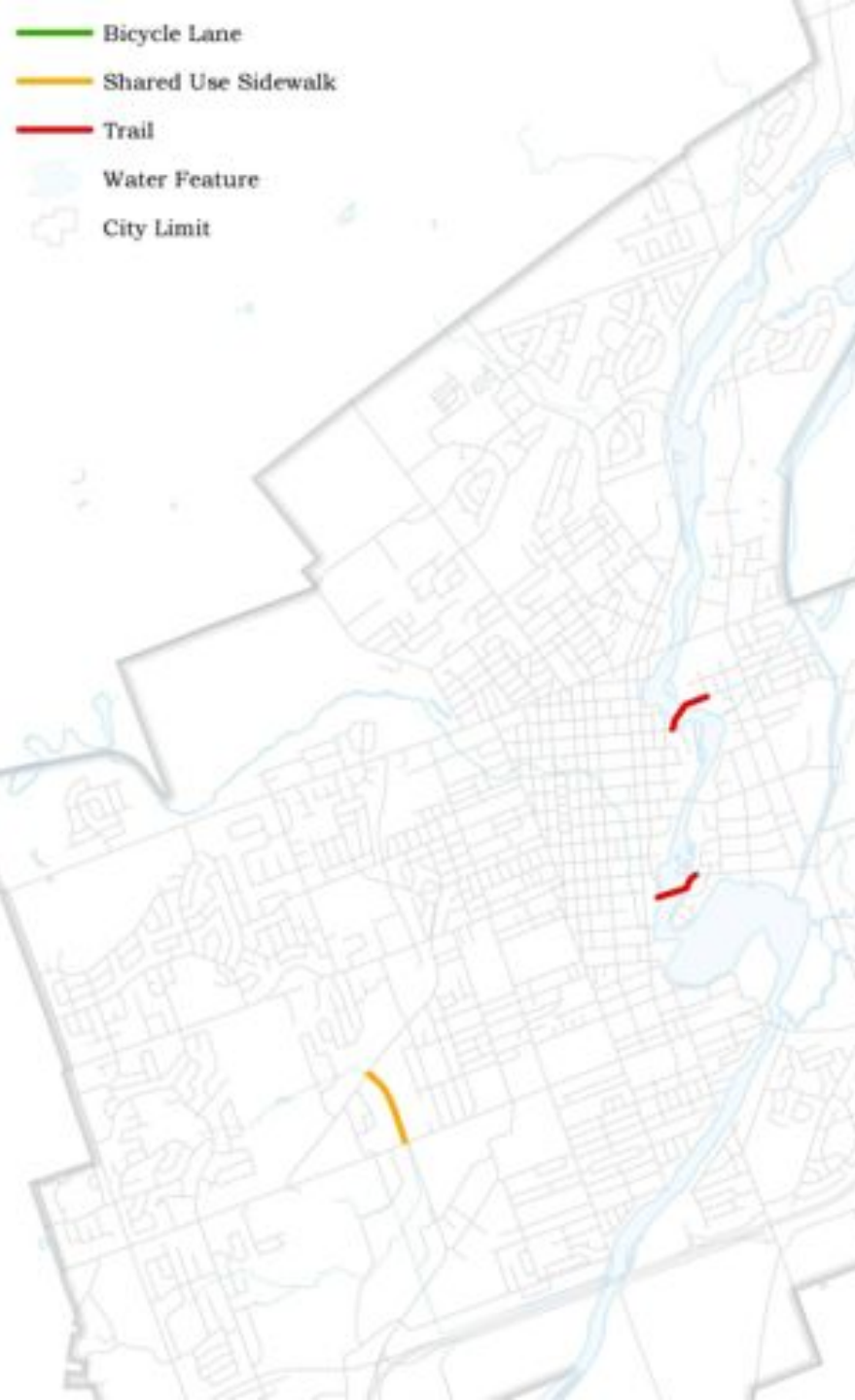
City of Peterborough

Trails and Bikeways – A Status Report

Where we are heading

- ▶ Transportation Plan approved in 2012
 - ▶ 183 km bikeways
 - ▶ 86 km off-road (trails)
 - ▶ 97 km on-road (bike lanes, bike tracks, etc.)
- ▶ Implementation is underway
 - ▶ \$500,000 capital budgeted annually
 - ▶ 55.4 km (30%) of bikeways are now in place
 - ▶ 26.7 km off-road (trails)
 - ▶ 28.7 km on-road (7.7 km of cycling lanes & 2.6 km cycle paths adjacent to roads need upgrading)

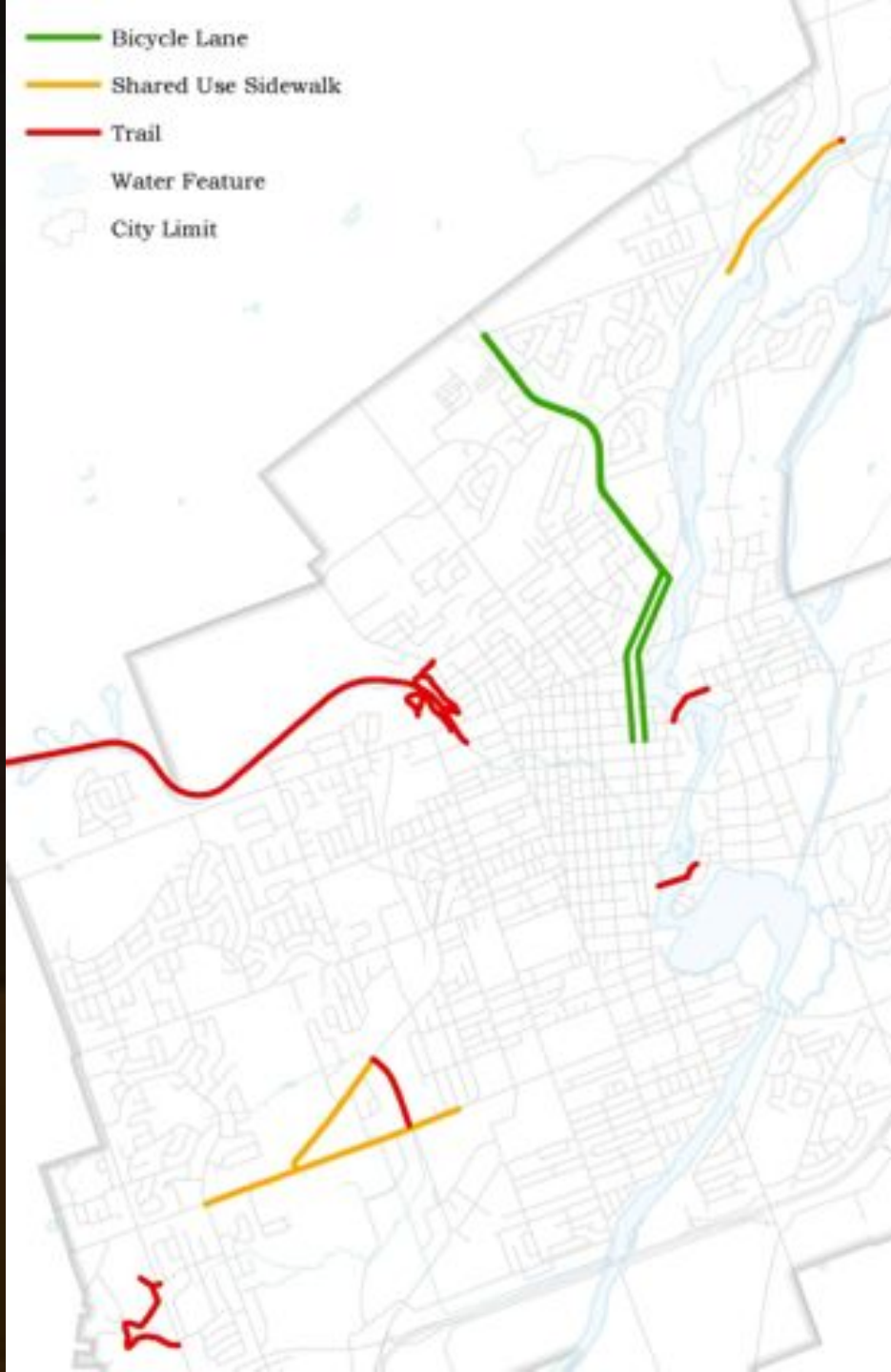
Peterborough's Bikeway Network Over Time



1991

1.4 km

- Bicycle Lane
- Shared Use Sidewalk
- Trail
- Water Feature
- City Limit



1995

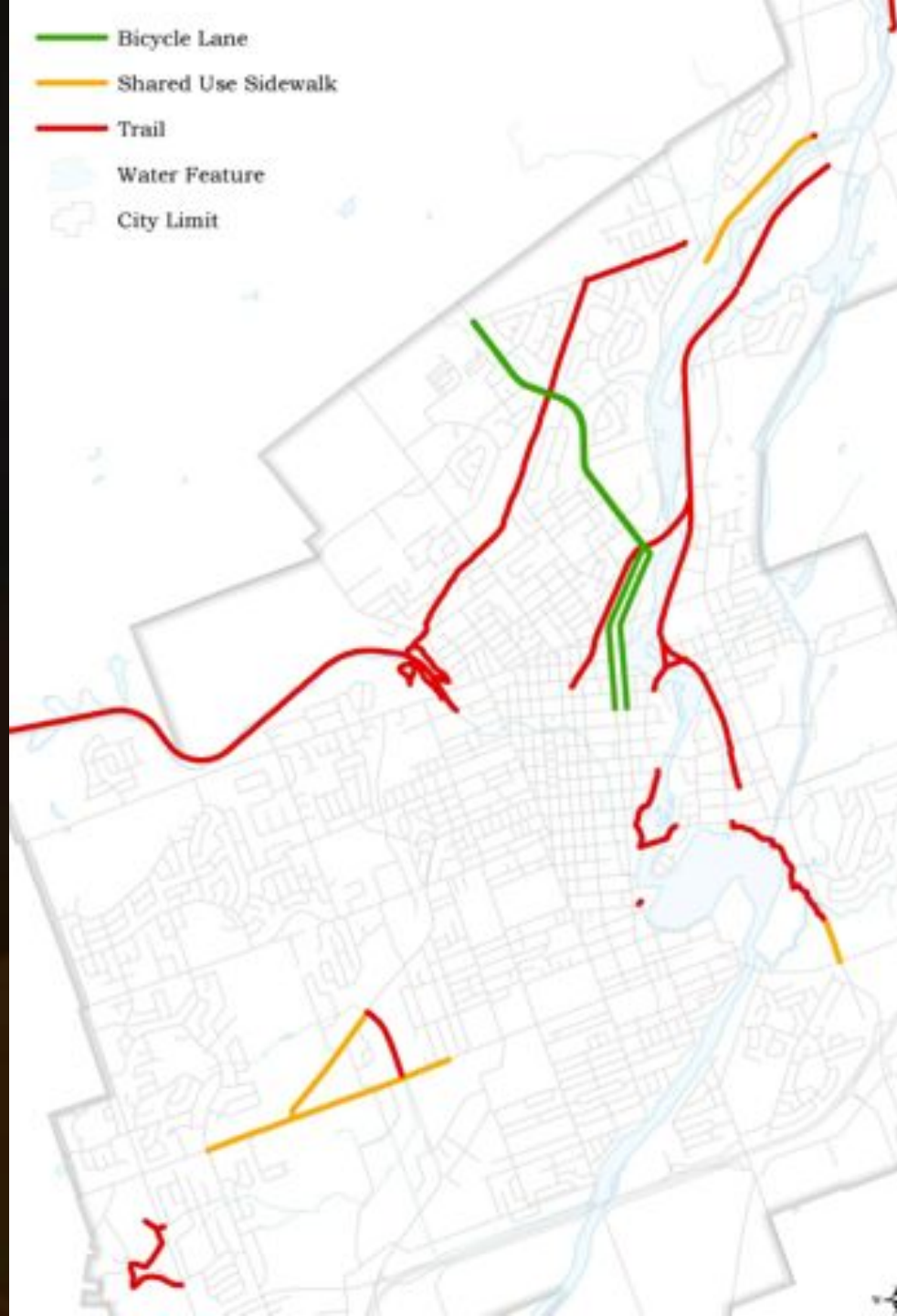
21.9 km



2000

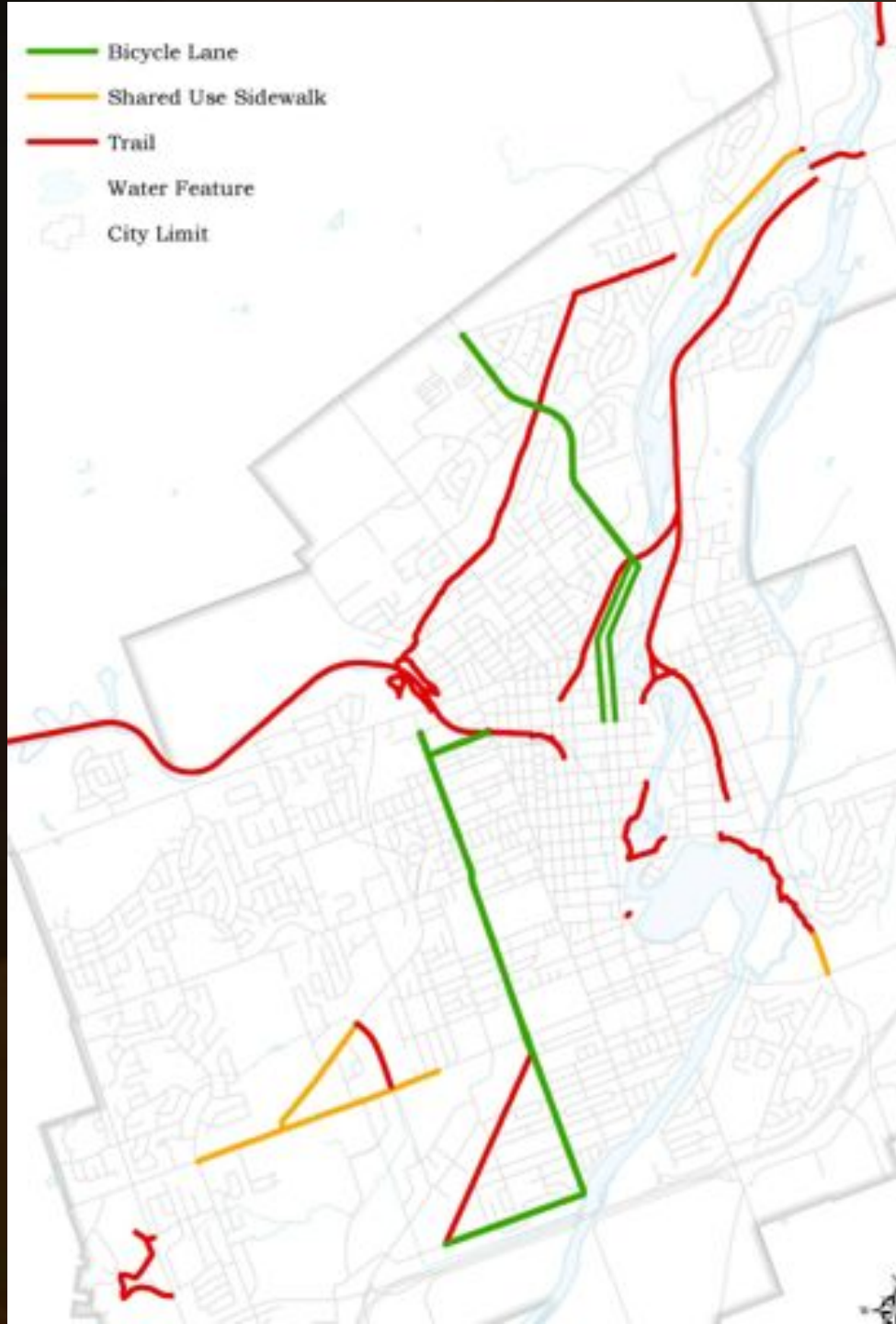
34.3 km

- Bicycle Lane
- Shared Use Sidewalk
- Trail
- Water Feature
- City Limit



2006

38.7 km



2010

54.1 km



2013

59.3 km

Bike Parking

- ▶ 24 inverted U and 10 ring racks were installed this year on Water, Charlotte and Hunter Streets.
- ▶ We now have **629 bike parking spaces provided** in public spaces, **156 of which were added in 2013.**



Upcoming Projects

- ▶ Reconstruction of Ashburnham Drive (2015), to include cycling tracks
- ▶ Extension of trail adjacent to the Parkway between Lansdowne and Crawford (2014)
- ▶ Completion of trail from Roger's Cove to train bridge (2014)



Typical Cycling Track Cross-Section

Upcoming Projects (con'd)



- ▶ Cycling lanes on George St. (Sherbrooke to Perry St) (2015)
- ▶ Extension of Otonabee River Trail to Haggart St. (2014-2015)
- ▶ Upgrading of cycling lanes on George & Water Streets (2014)



Thank You!

Susan Sauvé, TDM Planner
City of Peterborough