

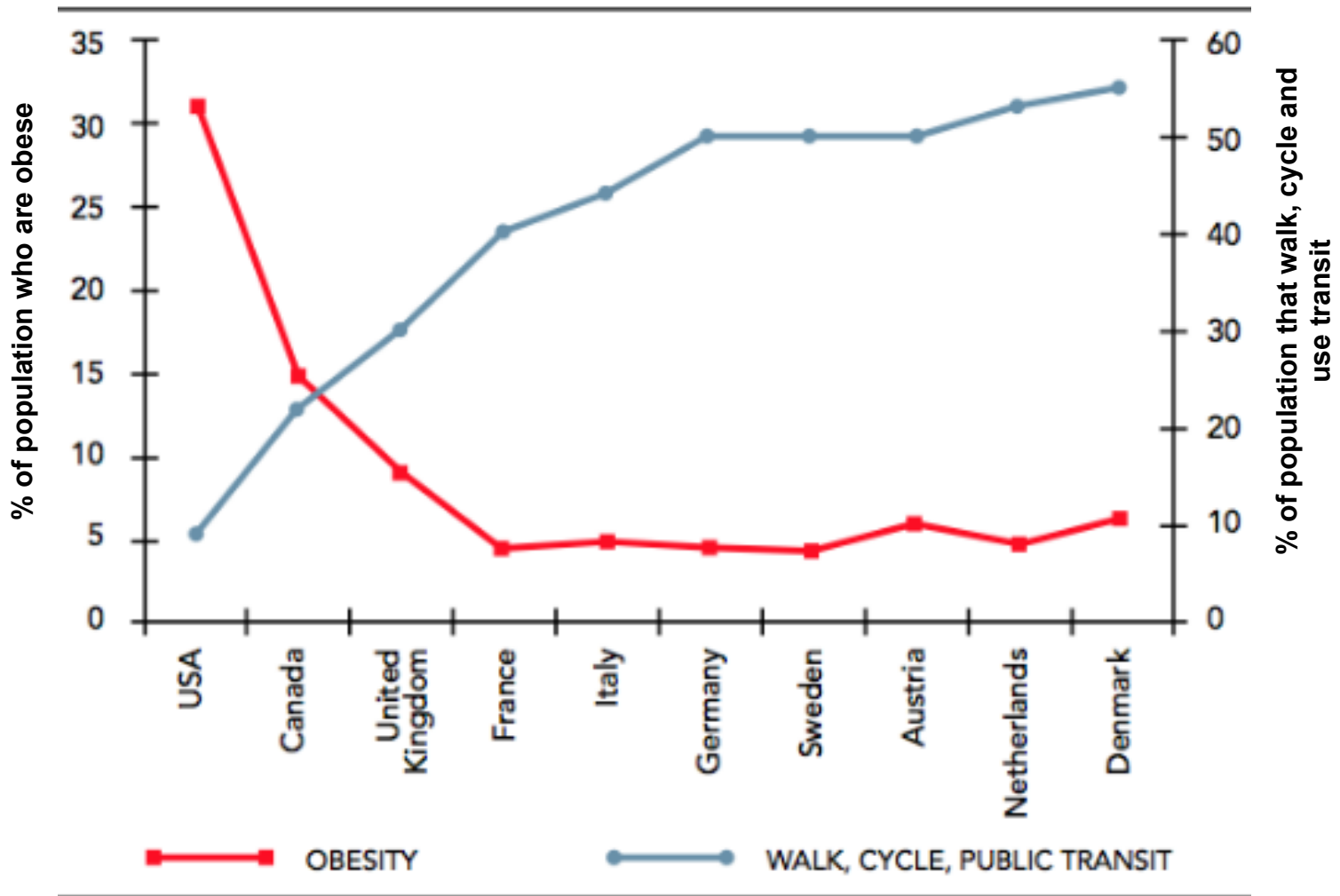
# Peterborough County and City: A snap shot of local health data

Dr. Rosana Pellizzari  
Medical Officer of Health  
Peterborough County-City Health Unit  
Peterborough and Kawarthas Cycling Summit  
October 24, 2013

# We know that...

- Being physically active helps to prevent over 25 chronic diseases and conditions.
- When more people walk and bike there are less injuries and fatalities.
- Reductions in automobile trips results in less air pollution.
- Walking and cycling provides an equitable mode of transportation for all.
- Investments in walking and cycling infrastructure are very cost effective; even more so when considering the health benefits.

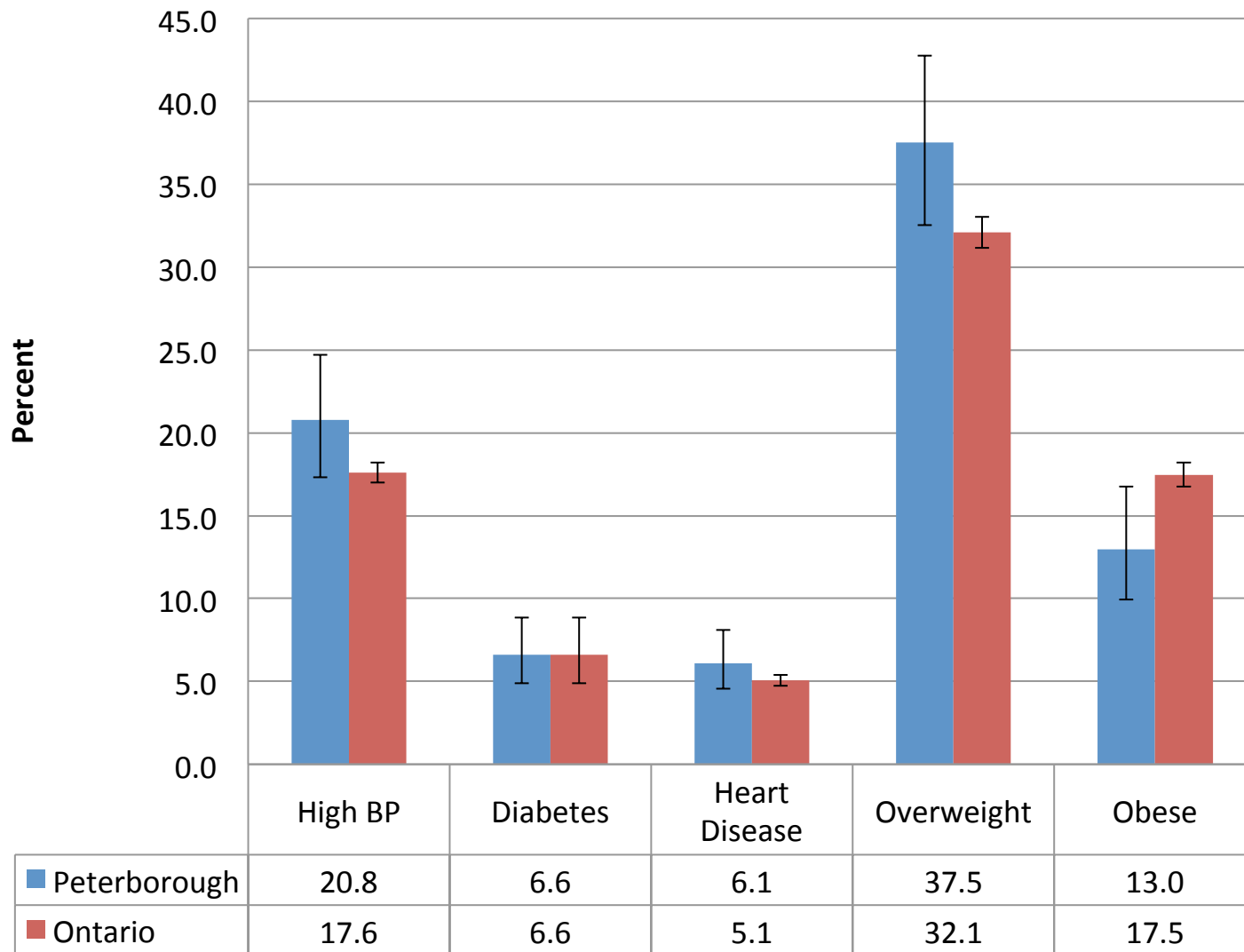
# Population level relationship between obesity and combined walking, cycling and transit mode share



Source: Cited in Toronto Public Health (2012) from Transport Canada (2010) with data from Basset et al. (2008).

# What is happening in Peterborough?

# Rates of chronic diseases and conditions for Peterborough, 2011/12

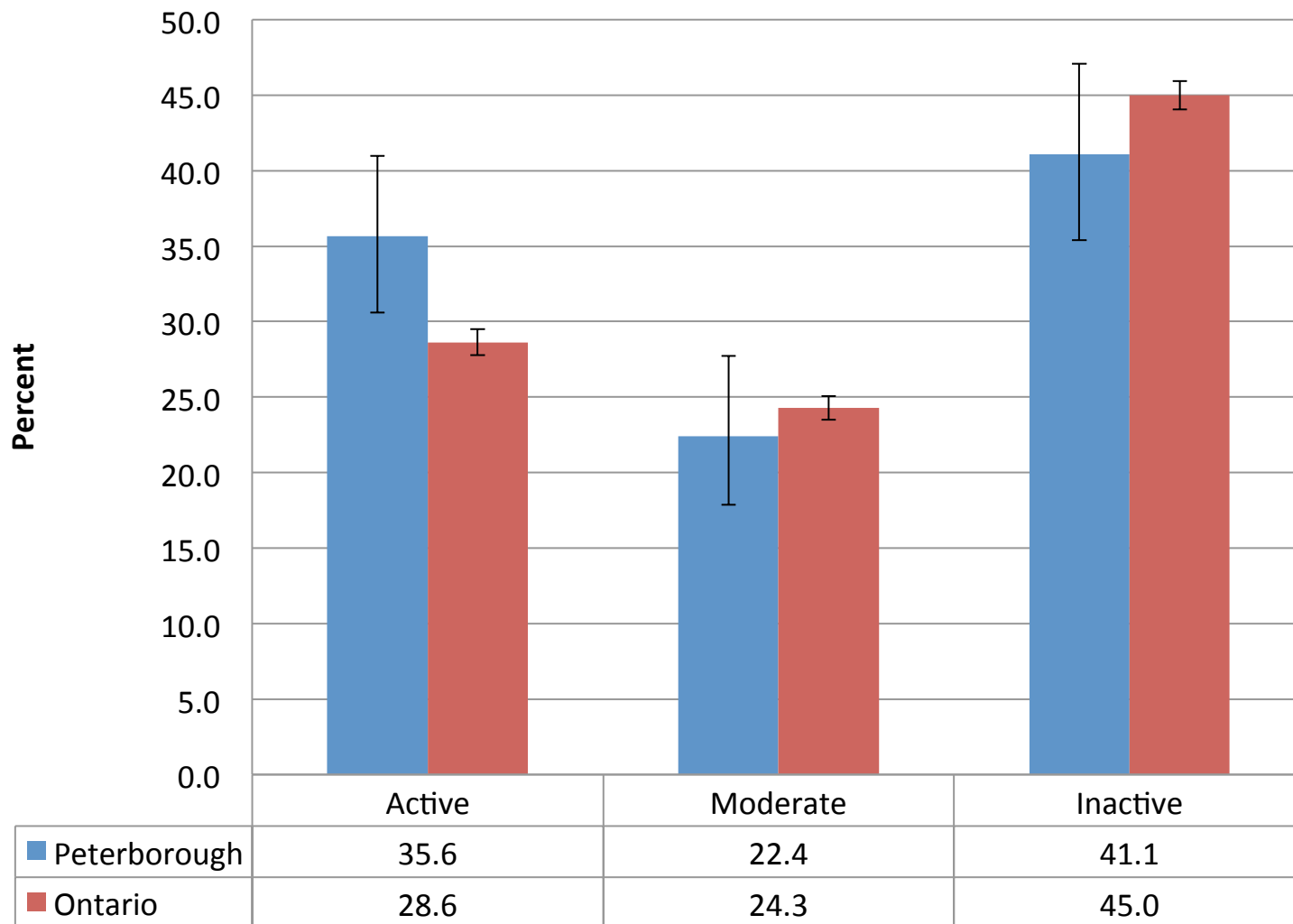


# Peterborough and the Social Determinants of Health

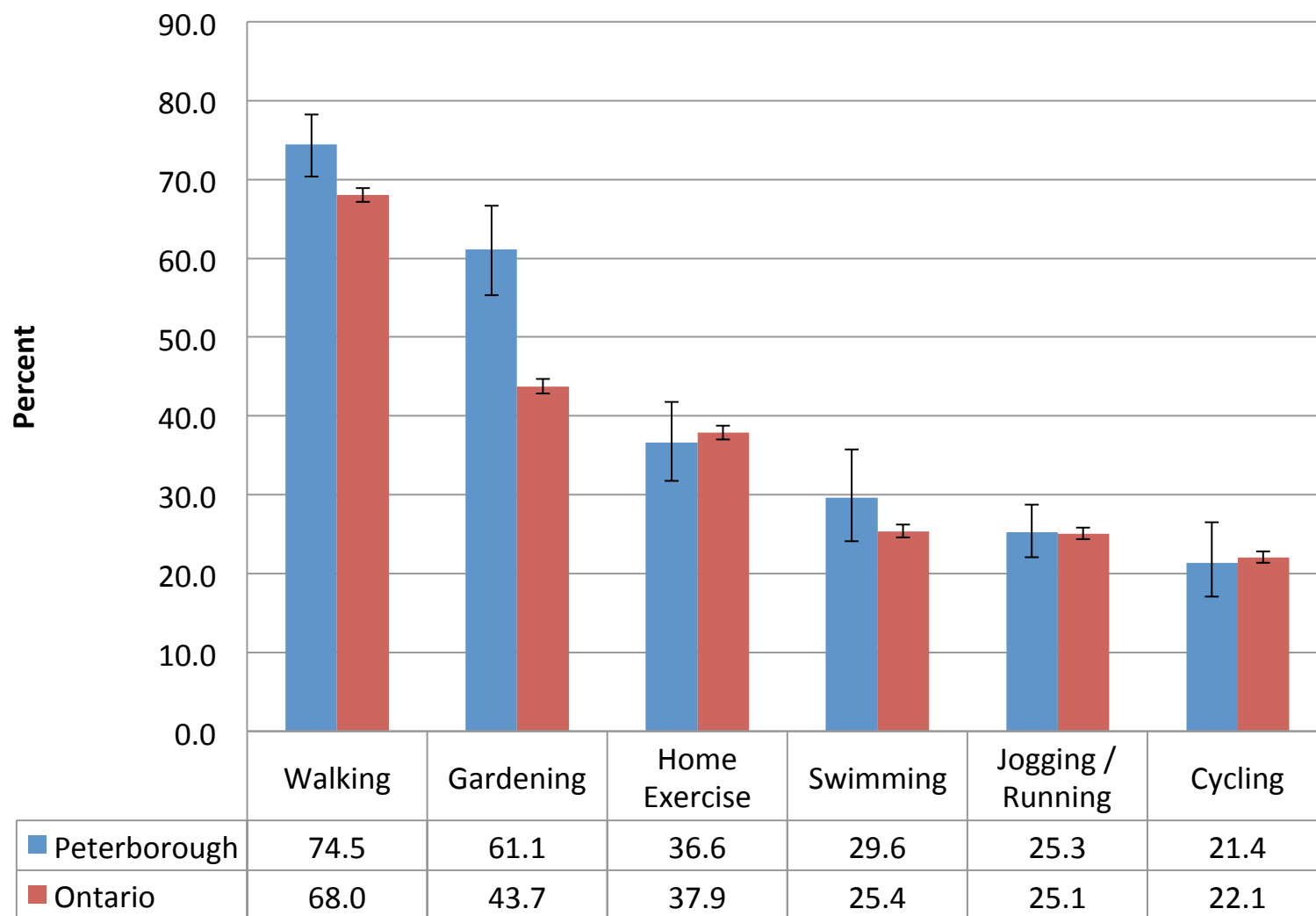
	Peterborough: City	Peterborough: City and County	Ontario
Low Income – all persons*	12.6 %	9.1 %	11.1%
Low Income - <18 years of age*	13.4 %	9.7 %	13.7 %
Aboriginal Identity*	2.3 %	3.2 %	2.0 %
Senior Population†	20.0 %	20.0 %	14.6 %
Post-Secondary Education*	43.1 %	41.7 %	46.1 %
Core Housing Need*		50.4 %	44.6%

\* 2006 Census; † from 2011 Census

# Proportion of Peterborough who are active, moderately active, or inactive, 2011/12

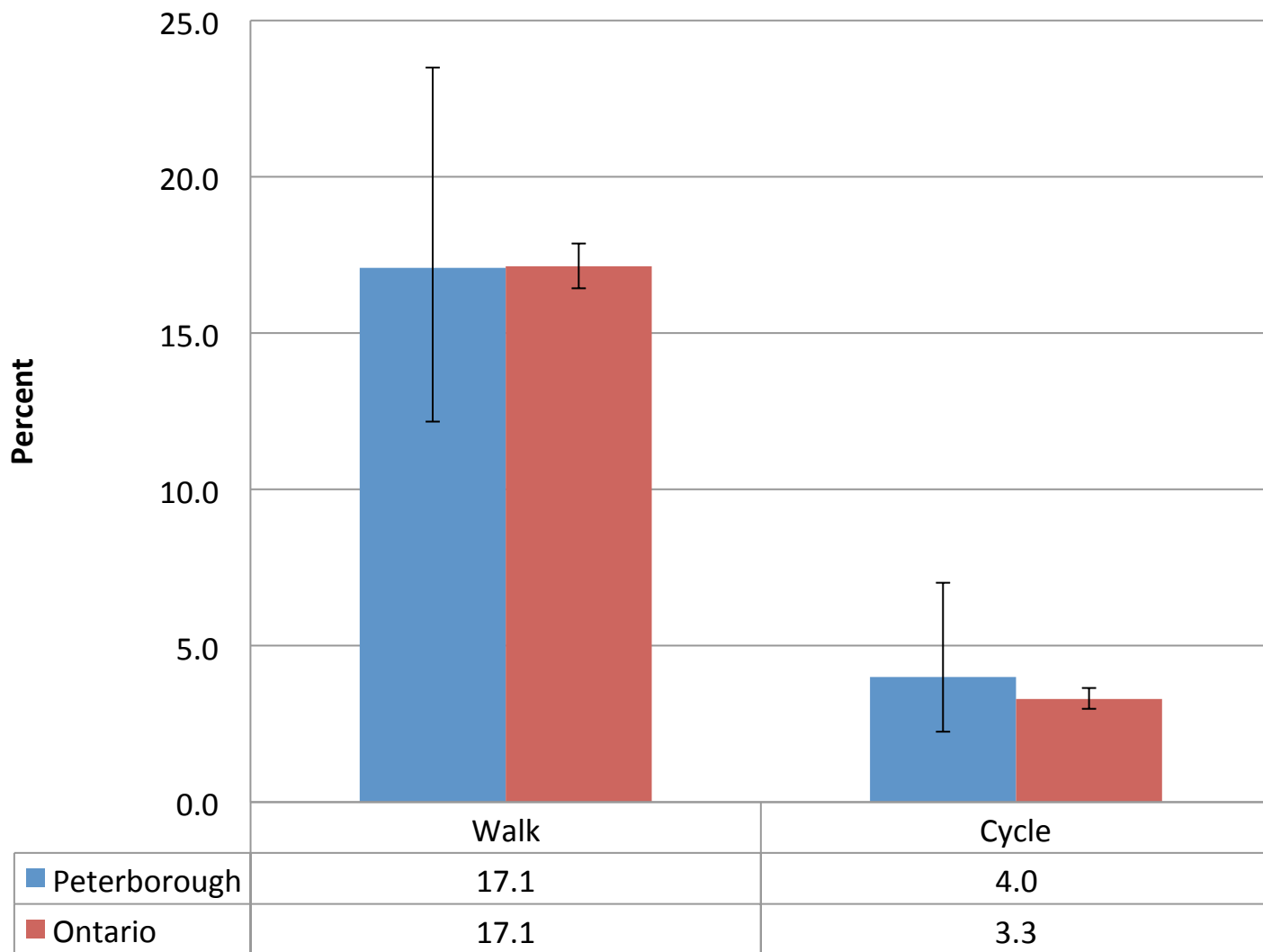


# Self reported types of physical activity in the past 3 months for Peterborough, 2011/12





# Proportion of Peterborough residents walking or cycling to work, 2011/12



**Thank you!!**